

Commonwealth of Pennsylvania  
Department of Transportation

**SPECIFICATION FOR STEEL SLEEVES FOR WOOD POSTS**

August 15, 1994

**1. SCOPE**

This specification covers steel sleeves and shims for embedment in concrete foundations to facilitate the installation and removal of 4"x4", 4"x6", 6"x6", and 6"x8" wood sign posts.

**2. GENERAL REQUIREMENTS**

**2.1 Fabrication.** The sleeves shall be fabricated from 12-gauge steel galvanized in accordance with ASTM-A123, formed into a rectangular shape with internal dimensions as noted in the drawing. All corners shall be square, with maximum deviation being 1/16th inch on any side. The sleeves shall have a welded vertical corner seam.

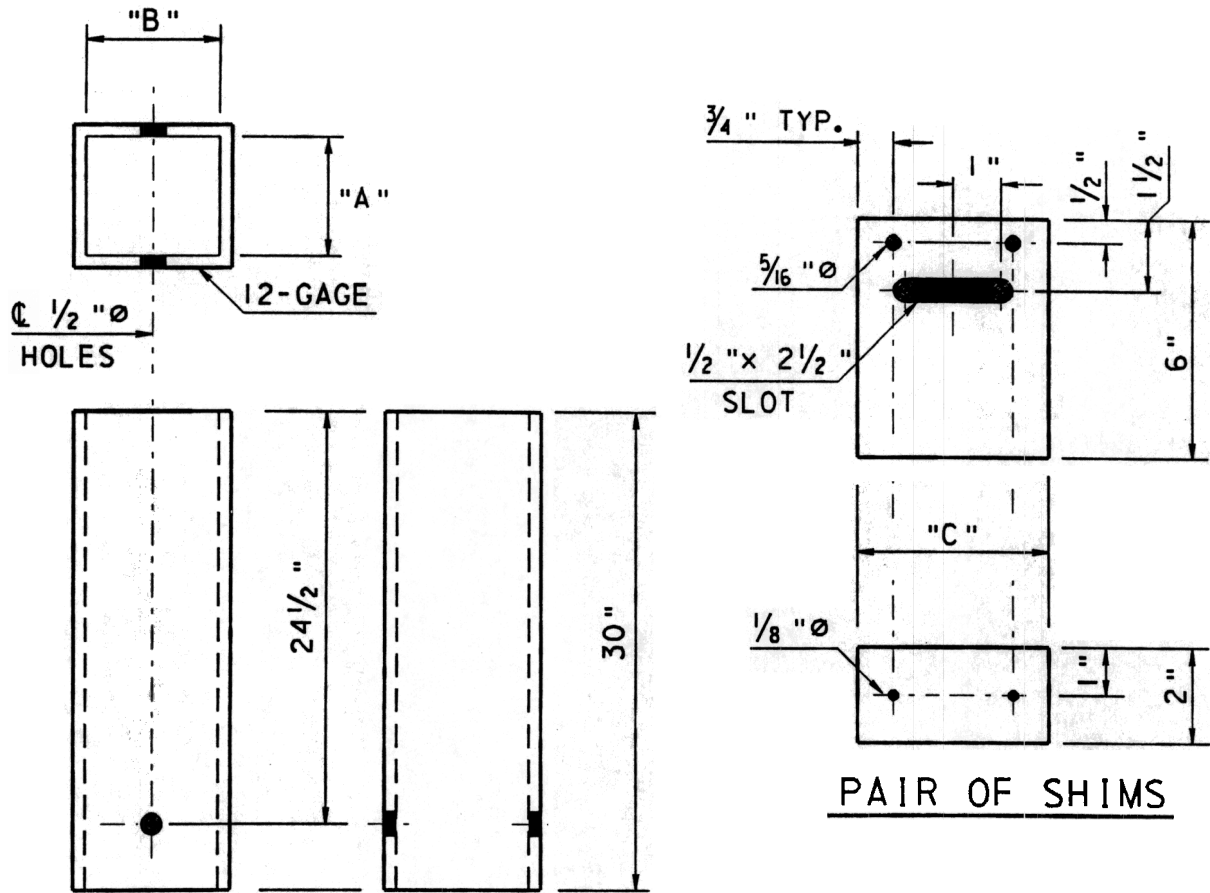
**2.2 Hardware.** Each sleeve shall also have the following hardware items:

- Two pairs of shims -- one pair for two adjacent sides of the wood post -- fabricated from 3/8-inch thick steel plates in accordance with the attached drawing.
- Four 1/4-inch x 1 1/2-inch long cadmium-plated steel lag screws.
- One 7/16-inch diameter cadmium-plated machine bolt with a length at least 7/8-inch longer than dimension "A" on the attached drawing. A 7/16-inch diameter, cadmium-plated nut shall also be included.

**2.3 Assembly.** The 7/16-inch diameter bolt shall be inserted through one of the 1/2-inch diameter holes in the sleeve, and then through the other 1/2-inch diameter hole in the opposite side of the sleeve. The nut shall be tightened.



A. H. Breneman, P.E.  
Chief, Traffic Engineering and  
Operations Division.



STEEL SLEEVE

NOMINAL SIZE	DIMENSIONS		
	"A"	"B"	"C"*
4 "x 4 "	4 1/8 "	4 1/8 "	3 7/8 "x 3 7/8 "
4 "x 6 "	4 1/8 "	6 "	3 7/8 "x 5 3/8 "
6 "x 6 "	6 "	6 "	5 3/8 "x 5 3/8 "
6 "x 8 "	6 "	8 "	5 3/8 "x 7 3/8 "

\* ONE EACH SIZE PER POST

**STEEL SLEEVES FOR WOOD POSTS**